

**Alliance
Theatre**

Drama Camp

**SUMMER
DRAMA CAMP
CAREGIVER PACKET**

The Epstein School

General Information

Location

The Epstein School
335 Colewood Way NW,
Sandy Springs, GA 30328

Contact Information

404.733.4466 // camps@alliancetheatre.org

The Experience

Alliance Theatre Drama Camps value process over product. We focus on the journey, encouraging students to embrace their unique creative expression while building character, growing confidence, and exercising imagination. Camps culminate in a short performance for friends and family that highlights progress—not perfection.

Caregiver Forms

You will receive an invitation from CampDoc, our online registration portal, ahead of your camp. Please follow the link and instructions in your personalized email. If you have not received it within a week of your camp start date, please check your spam folder or contact us at camps@alliancetheatre.org.

Forms must be completed before arriving for camp. If they are incomplete, it will delay your check-in.

Bullying Policy

The Alliance Theatre does not permit bullying of any kind. Bullying or intentional harassment, including cyberbullying, may result in expulsion from Alliance Theatre activities with no refund provided.

Cell Phone & Technology Policy

We believe in the power of connection, creativity, and presence. To fully embrace the experience, we encourage a screen-free environment where campers can immerse themselves in the magic of storytelling and build lasting friendships.

Cell phones should be left at home or silenced and put away.

In the case of an emergency, caregivers can reach out to staff, who will ensure prompt communication.

What to Bring

Bring:

- Backpack or bag
- Nut-free lunch (non-refrigerated)
 - Include all necessary utensils
 - A microwave is not available
- 2 nut-free snacks
- Water bottle
- Blanket or towel to sit on during lunch
- Extra outfit (for kindergarten)
- Medication
 - Medication should be in a clear plastic bag that includes written instructions.
 - Caregivers must complete all medical forms associated with camper registration.

Due to the increased commonality of nut allergies, we ask that you refrain from packing nut products for the safety of all our campers.

DO NOT Bring:

- Cell phones or other technology devices (laptops, iPads, gaming devices, etc.)
- Personal jewelry or treasured family items
- Weapons or toys depicting weapons
- Alcohol or tobacco products or items depicting alcohol or tobacco products
- Treats or food to share with the class

SPECIAL NOTE:

Campers are welcome to bring meat, chicken, and other protein-based items in their lunches.

However, in keeping with the values and guidelines of our host school, please do not send any items that contain pork, bacon, ham, or shellfish.

Daily Schedule

Grade	Drop-Off	Morning	Lunch	Afternoon	Pick-Up
1-8	8:45-9:00AM	9AM-12PM	12-1:00PM	1:00-4:00PM	4:00-4:30PM

- Daily sessions include ensemble building activities, theater games, and arts and crafts.
- All students take two 15–20-minute snack breaks. These are usually taken halfway through the morning and afternoon sessions.
- Depending on the weather, breaks and lunch will take place outside.

Morning Drop-Off

- On the first day of camp, please park and enter the building to check in your student in at the Front Office. Please look for the “Drama Camp” sign.
- On all other days of the camp week, drop off is in the student pick-up and drop-off area.

Grades 1-8

8:45am-9:00am

Afternoon Pick-Up

- Pick-up occurs each afternoon during camp, excluding showcase day.
- Campers will arrive in the lobby/gym area, and camp staff members will begin assisting students to their vehicles at the time of their designated pickup.
- If you are in your vehicle and have your number prominently displayed in your window, a staff member will come by to check your number, retrieve your camper, and escort them to your car.
- Caregivers must remain in their vehicles at all times unless assisting campers into their vehicle.
- Students whose caregivers arrive late for pick-up will be charged a \$25 late fee.
 - Please note that there is no grace period.

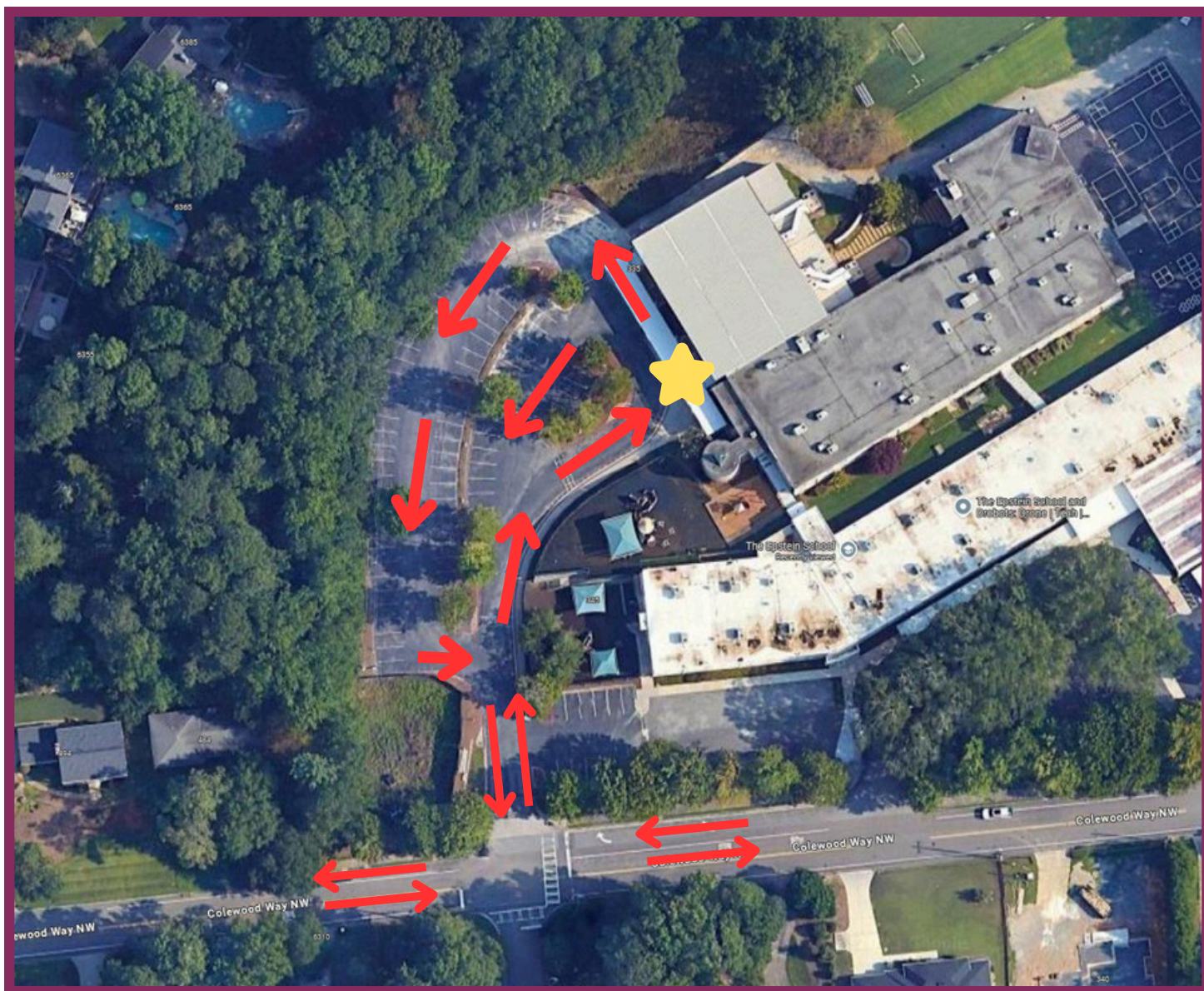
Grades 1-8

4:00pm-4:30pm

Late Drop-Off/Early Pick Up

- If you are dropping off your camper AFTER 9:15AM, you must park and bring your camper to the camp office and check-in with camp staff on the 2nd floor.
- DO NOT take your camper directly to their classroom.
- To coordinate an early pick-up for your camper, call 404.733.4466 when you arrive, and then park and come up to the 2nd floor Admin Office suite to pick up your camper.
- We are not able to honor an early pick-ups after 3PM.
- No classroom check-outs are permitted.
- If you need assistance, call 404.733.4466.

CARPOOL MAP



Friend Form

If your student is attending with a friend, please fill out the friend form so that they can be placed in the same class. Please complete this form even if you registered your student for the same class as a friend so that we can ensure neither of them are moved.

Students cannot be placed together if they are in different grade groups.

Friend forms must be completed at least 72 hours in advance of your first day of camp.

[Fill Out Form](#)

Aftercare

- We do not offer Aftercare at our Epstein School location.

Costumes

- Students are encouraged to wear their provided camp t-shirt for showcase day!
- If desired, campers may wear simple costume pieces or accessories to represent their character. We recommend “closet shopping” for items you already own.
 - This is not required!
- Any costume pieces or accessories should be brought on showcase day. Students should not arrive in costume.
- If students plan to wear makeup, please apply at home.

Showcase Schedule

- Showcase Invitation: Friends and family are invited to campus for a final-day showcase. Arrive early, as we cannot delay the start time.

Preview
Performance

11am

Grades K-4
Showcase

3pm

Grades 5-8
Showcase

3:30pm

- Multiple Campers:
 - The 11AM preview allows families to see two showcases in one day.
- End-of-Day Plan:
 - There is no carpool or aftercare on the final day of camp—campers leave with their caregiver after the showcase.
- Parking:
 - The Epstein School has several parking options near the front entrance.
 - Please do not park in any reserved parking spaces.
- Recording:
 - We do not provide recordings of final day showcases, but families are welcome to record performances.