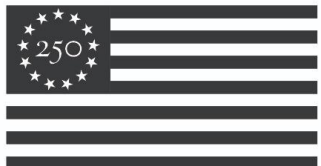


Poetry Out Loud Georgia // 2025-2026 Office Hours

NATIONAL
ENDOWMENT for the **ARTS**

POETRY OUT LOUD 



Freedom 250




Georgia
COUNCIL
for the **Arts**™

**Alliance
Theatre**

Welcome // Georgia Council for the Arts

GCA Mission

To cultivate the growth of vibrant, thriving Georgia communities through the arts.

GCA Goals

- Expand economic development opportunities through the arts
- Grow GCA's services to new audiences and communities
- Utilize arts to fortify education in the state
- Strengthen the arts sector

GCA is a strategic arm of the Georgia Department of Economic Development (GDEcD), the State of Georgia's marketing and sales arm.



gaarts.org

Welcome // Alliance Theatre

Mission

The Alliance Theatre is Atlanta's national theater, expanding hearts and minds onstage and off.

Program Goals

The Alliance delivers powerful programming that challenges adult and youth audiences to think critically and care deeply.

Institute

A branch of the organization's robust education department, the Alliance Theatre Institute partners with school districts and schools to deliver professional learning for educators and arts integrated or theater-based instruction for students.



What is Poetry Out Loud?

Poetry Out Loud® lifts poetry off the page, creating community and connection. Since the program began in 2005, more than 4.5 million high school students have participated in this dynamic poetry recitation competition. Poetry Out Loud can help students improve public speaking skills, build confidence, and grow their appreciation for poetry.

In recognition of America's 250th anniversary in 2026, the 2025-2026 Poetry Out Loud program will focus on poems that celebrate the rich tapestry of American history and culture.

An updated list of poems for this year's competition is available at PoetryOutLoud.org.

An initiative of the National Endowment for the Arts, Poetry Out Loud is administered at the state level by the state and jurisdictional arts agencies and free educational materials for teachers and organizers. Poetry Out Loud is managed in partnership with Mid Atlantic Arts.

National Guidelines & Resources

As an important note, the national Poetry Out Loud site was revised & relaunched this past October 2025 and provides thorough resources for students, teachers, and organizers, including a “Find Poems” tab with an **updated list of poems** for the 2025-2026 competition. Please be sure to review this information **very carefully** as you plan for your participation this year.



Visit: PoetryOutLoud.org

Poetry Out Loud Structure

Local Contests	Regional Contests	State Final	National Finals
<p>registered school & community sites (30)</p> <p>registered individual students (2)</p> <p> : View Map</p>	<p><u>In-Person: Saturday, February 7</u></p> <p>Regional 1: Metro ATL 1 (11 AM) Regional 2: Metro ATL 2 (3 PM) Alliance Theatre Rehearsal Hall A</p> <p><u>Virtual: Tuesday, February 10</u></p> <p>Regional 3: Virtual (6 PM) Live via Zoom</p>	<p><u>In-Person (encouraged)</u> <i>with virtual option (emergency)</i> <u>Friday, March 6 @ 6 PM</u></p> <p>Woodruff Arts Center's Goizueta Stage for Youth & Families</p> <p>Opening January 2026: transformative 300-seat theater</p> 	<p><u>In-Person (required)</u> <u>Monday, April 27 - Wednesday,</u> <u>April 29</u></p> <p>George Washington University Lisner Auditorium Washington, DC</p> <p><i>administered by the NEA and Mid Atlantic Arts</i></p> 

Virtual Student Workshops

Preparation for Regional Contests: Saturday, January 24 @ 10 AM – 12 PM

Preparation for State Final: Saturday, February 14 @ 10 AM - 12 PM

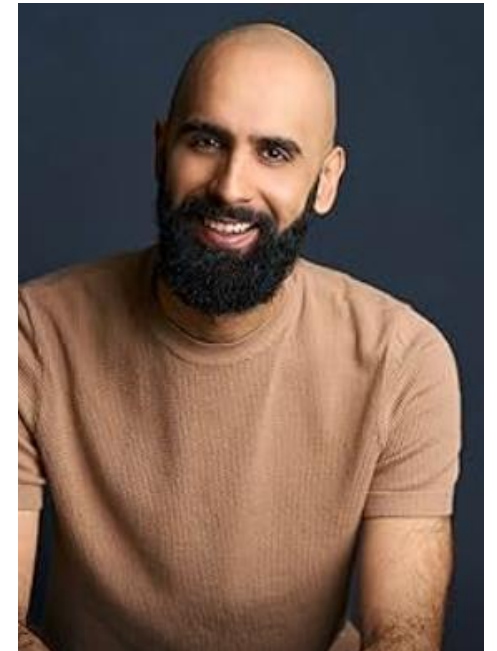
Facilitated by:

Maya Lawrence, Resident Artist & Allyship Program Director
and Angel Fabián Rivera, Teaching Artist

Workshops will orient students to next steps

& address Evaluation Criteria:

- Physical Presence
- Voice and Articulation
- Interpretation
- Evidence of Understanding
- Overall Performance
- Accuracy



What to Expect: Regional Contests

In-Person: Saturday, February 7

- 📍 **Regional 1 - Metro ATL 1 (North):** Alliance Theatre – Rehearsal Hall A @ 11 AM
- 📍 **Regional 2 - Metro ATL 2 (South):** Alliance Theatre – Rehearsal Hall A @ 3 PM

Virtual Regional Contest: Tuesday, February 10


💻 **Regional 3 - Virtual:** Live via Zoom @ 6 PM

What to Expect:

- 🎤 Round 1: All Students | 🎤 Round 2: All Students
- 🎤 Prepare: 2 poems

What to Expect: State Final




State Final: Friday, March 6 @ 6 PM

 In-Person: Woodruff Arts Center – Goizueta Stage for Youth & Families

Format Note:

- To best prepare students for the required in-person format of Poetry Out Loud National Finals, in-person participation at the State Final is highly encouraged and is expected (by default).
- A virtual option will be available to accommodate exceptional circumstances such as emergency, illness, or other unresolvable barrier to in-person participation.
 - To request and confirm plans for utilizing the virtual option, students must contact [Liz Davis](#)

What to Expect:

 Round 1: All Students |  Round 2: All Students |  Round 3: Top % TBA

 Prepare: 3 poems

Prizes // State & National

State Level:

- \$200 for each first-place winner
- \$500 for poetry materials for each first-place winner's school or organization
- \$100 for one runner-up in each state
- \$200 for the purchase of poetry materials for each runner-up's school or organization

Note:

Mid Atlantic Arts provides and administers all aspects of the monetary prizes awarded and travel arrangements to the Poetry Out Loud National Finals.

National Level:

- \$20,000 for the National Champion
- \$10,000 for 2nd place
- \$5,000 for 3rd place
- \$1,000 for 4th–9th places
- Representing schools/organizations of top nine finalists receive \$500 for the purchase of poetry materials.
- One honorable mention in each of the three national semifinal competitions – those students will not advance to the finals, but will each receive a \$1,000 cash award and a \$500 stipend for their school/organization.

Judging Procedures

How are Poetry Out Loud recitations evaluated?



National Resources & Guidelines:
[Judging a Competition](#)

[Judges Guide](#)

- Evaluation Criteria (pages 6-7)
- Competition Judge Score Sheet (pages 9-10)
 - Maximum of 33 points
- Accuracy Judge Score Sheet (page 12)
 - Maximum of 8 points (added to each evaluation, totaling 41 points)

Support Roles

- Producer(s)
- Tabulator(s)
- Emcee
- [Prompter](#)

Contact

Alliance Theatre

Liz Davis, Producer

Head of Secondary Curriculum and Partnerships

liz.davis@alliancetheatre.org

Katie Wolff, Associate Producer

Institute Program Coordinator

katie.wolff@alliancetheatre.org

General Inquiries

poetryoutloud@alliancetheatre.org



Emily Yewell Volin

Grants and Arts Education Program Manager

EVolin@Gaarts.org